



DUOMED

SonoScape

BOOSTED BRILLIANCE AT EVERY TURN

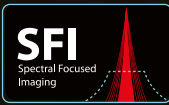
HD-550 Full Video Endoscopy System



www.duomed.com

HD-550 Full Video Endoscopy System

Introducing a boosted brilliance at every turn on your way to image clarity. HD-550 is equipped with the 4-LED light source, and an upgraded scope tubing. Supporting 1080p resolution, the added brightness provides even more image details under all light modes, and truly smooths the path in both diagnostic and therapeutic procedures.



BOOSTED BRILLIANCE

The one-stop, cost effective High Definition Video Endoscopy System of SonoScape's. The HD-550 Processor excels in a variety of routine and complex procedures which makes it the **'new' Golden Standard**.



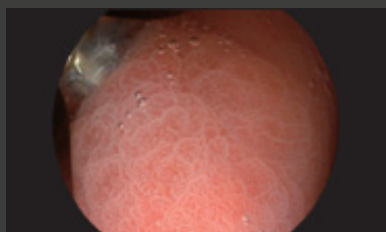
BRILLIANT WORKFLOW

Get to know our advanced DICOM system with a built-in workstation of 500GB. Record, create and edit images & videos on the spot without any need for extra software.



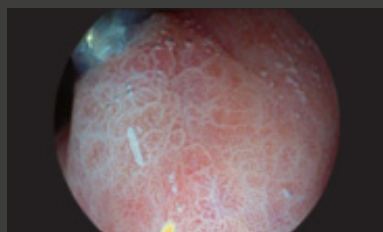
BOOSTED IMAGE PERFORMANCE

The 4-LED light source enables multi-spectrum and multi-mode imaging. Its versatility not only allows a superior brightness under the White Light mode, but also an uncompromised illumination under chromoendoscopy modes SFI1 and VIST2, where the vascular color contrast and mucosal structure are greatly enhanced. You will get much more from this level of image performance.



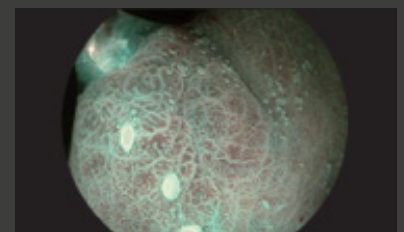
WHITE LIGHT MODE
(DEFAULT)

- ✓ High illuminated image
- ✓ True to color
- ✓ Suitable for routine observation



SFI MODE
(SPECTRAL FOCUSED IMAGING)

- ✓ Normal-focus mode with enhanced structure and color
- ✓ Supporting in detection and demarcation of the lesions



VIST MODE
(VARIABLE INTELLIGENT STAINING TECHNOLOGY)

- ✓ Near-focus mode with increased mucosal contrast
- ✓ Assisting in characterization of the lesions and diagnosis



BOOSTED LIFE SPAN

Get to know our VLS-55Q Series Light Source. The 4-LED source comes with an extended life span. Enjoy the reliable brightness for much longer before thinking about bulb replacement.

EFFICIENT HOT & COLD PLUG-IN

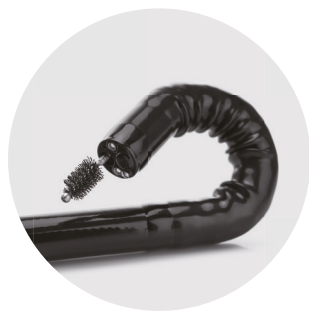
You can now switch a scope in the middle of procedure without shutting down the whole system. This will save you a lot of time and reducing the risk of damage.



HD-550		VLS-55Q SERIES	
Video output	SDI, DVI, VGA, CVBS, S-video	Main Lamp	Four LED lamps of different colors
Resolution	1080p	White light mode	High color rendering index and high luminous flux
Data management	500GB Build-in, 5 USB, DICOM	SFI/VIST	High brightness and specific spectra in the 2 special light modes
Patient data	> 10.000 records	Brightness	Auto/Manual, 1-19 levels
IRIS	Peak/Avg/Auto	Transillumination mode	6-8 seconds
Color adjustment	Red, Blue Chroma 15 levels	Service time	10000 hours (Continuous use)
Air feeding	4 levels	Hot plugging	Yes
AGC	Yes	Dimension (mm)	473 x 370 x 154
Chromo	SFI/VIST		
White Balance	Auto-saved		
Image enhancement	Structure- & Edge		
Contrast/denoise	L/M/H, auto-denoise		
Dimension (mm)	480 x 370 x 125		

THE 550 SERIES SCOPES

Motivated by our goal of providing a higher quality medical solutions for the patients, we are proud to present the 550 series scopes. Even more accurate and efficient through innovation in technology. Integrating global advanced technologies and resources, we are continuously investing into development and maintaining the advantages in our core technologies.



FULFILLING VISUAL FIELD

Diagnose and treat with confidence, thanks to its spacious instrument channel. After an easy intubation, observe to the full extent due to the scope's short bending radius and large field of vision.

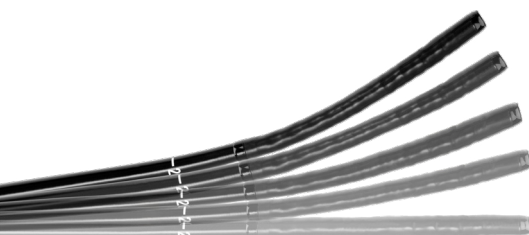
REAL WATERPROOF

The 550 series scopes can be submerged under water or solution without a waterproof cap. They can now be cleaned and disinfected with ease, at a minimal risk of water damage by mismanipulation.



QUIET EXPERIENCE

We have developed a silent and noise-reducing system, which benefits the experience for patients and users.



ADJUSTED STIFFNESS

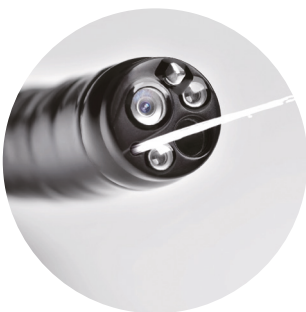
SonoScape's pediatric slim colonoscopes are physician focused. Their stiffness can be adjusted in continuous levels, and to the perfect nuance. The scope tubing is improved so it becomes more sensitive to the endoscopist's hand gestures, even easier to manoeuvre under challenging situations.



BOOSTED MANEUVERABILITY

ERGONOMIC EXPERIENCE

A new scope tubing paired with a light-weight handle. The upgraded 550 series scopes offer great comfort and ease during routine and complex operations. This helps to shorten the procedure time and reduces discomfort for you and your patients.

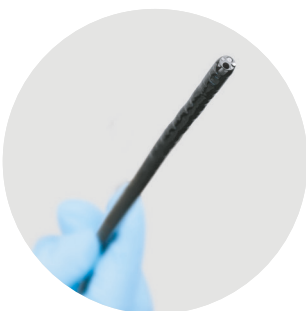


WATER JET

All the scopes are equipped with water jet function, handily aligned with the direction of the instrument channel. It washes off any mucus or blood and assures a clear view at all times.

UNIQUE COLONOSCOPE

Next to the common 3.8 mm work channel scope, we also have a 4.2 mm work channel scope. This benefits the suction-force when guiding an instrument through the channel.



ULTRASLIM COLONOSCOPES

With an insertion tube diameter as small as 9.3 mm, SonoScape's ultraslim colonoscopes offer the agility to treat children or patients with challenging anatomies in confidence.



BOOSTED PORTFOLIO

Since our founding, SonoScape has focused on innovating and developing medical equipment. Focussing on:

- ✓ Colonoscopy
- ✓ Gastroenterology
- ✓ Endoscopic ultrasound

550 SERIES SCOPES

Product Specs	EG-550	EG-550L	EG-P550N	EC-550T	EC-550L/T	EC-P560T
Depth of view	3-100 mm					2-100 mm
Distal End Dia.	9.3 mm	9.8 mm	5.4 mm	12 mm	12.9 mm	10.8 mm
Insertion Dia.	9.3 mm	9.8 mm	5.8 mm	12.5 mm	12.9 mm	11.5 mm
Instrument Dia.	2.8 mm	3.2 mm	2.2 mm	3.8 mm	4.2 mm	3.2 mm
Angulation	U210°, D90°, L/R100°			U/D180°, L/R 160°		
Working length	1050 mm	1050 mm	1100 mm	1700 mm	1700 mm	1700 mm
Water Jet	✓	✓	✓	✓	✓	✓
OneTouch	✓	✓	✓	✓	✓	✓
Optical FiberTrans	✓	✓	✓	✓	✓	✓



THE 27" MONITOR: UPLIFTED HAND-EYE COORDINATION

This large, near-patient surgical display is known for its exceptional image quality and advanced user interface.

- ✓ An excellent depth perception and extra accurate images
- ✓ The light output stabilisation ensures image consistency. The unique failover mode enables automatic switch to a defined backup source when the main input signal is missing
- ✓ Smart cable management system for a clutter-free set-up
- ✓ Highly durable, scratch-resistant front glass that promotes a sublime optical performance.

HDT-500 TROLLEY

Designed to streamline your workflow, SonoScape's trolley makes a perfectly stable and reliable companion in your endoscopy room.

- ✓ Each of the two monitor-supports is set to carry a large 27" monitor, mounted on a swivel arm and can be freely adjusted to the angles of your preference
- ✓ The integrated isolation transformer enables a one-point system power switch. It is safer, more convenient and no more tangle of wires.



Exclusive distributor of SonoScape in The Netherlands



Sales
+31 318 54 32 23
sales.nl@duomed.com

Service
+31 318 51 89 48
service.nl@duomed.com



Duomed The Netherlands • Landjuweel 16-7 • 3905 PG Veenendaal • The Netherlands • www.duomed.com